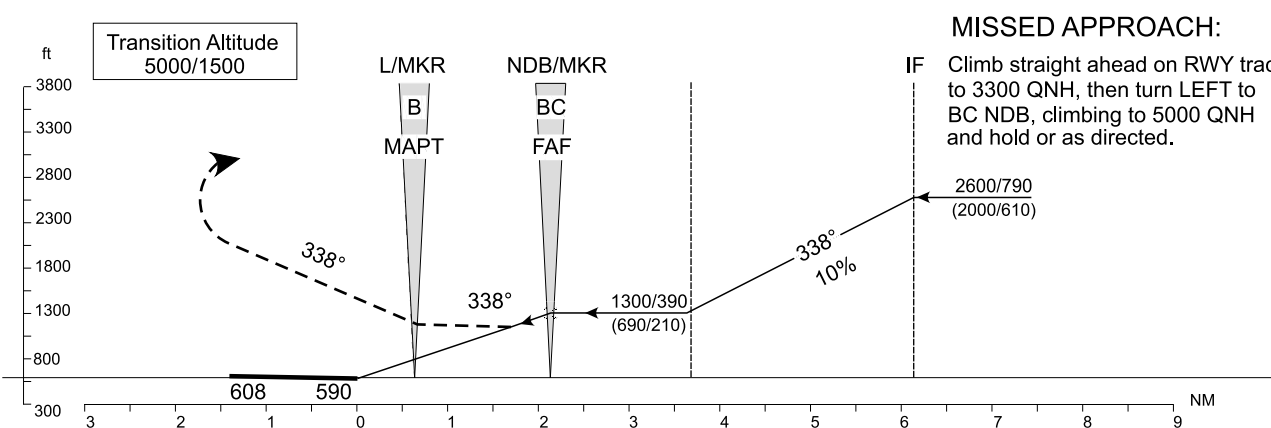
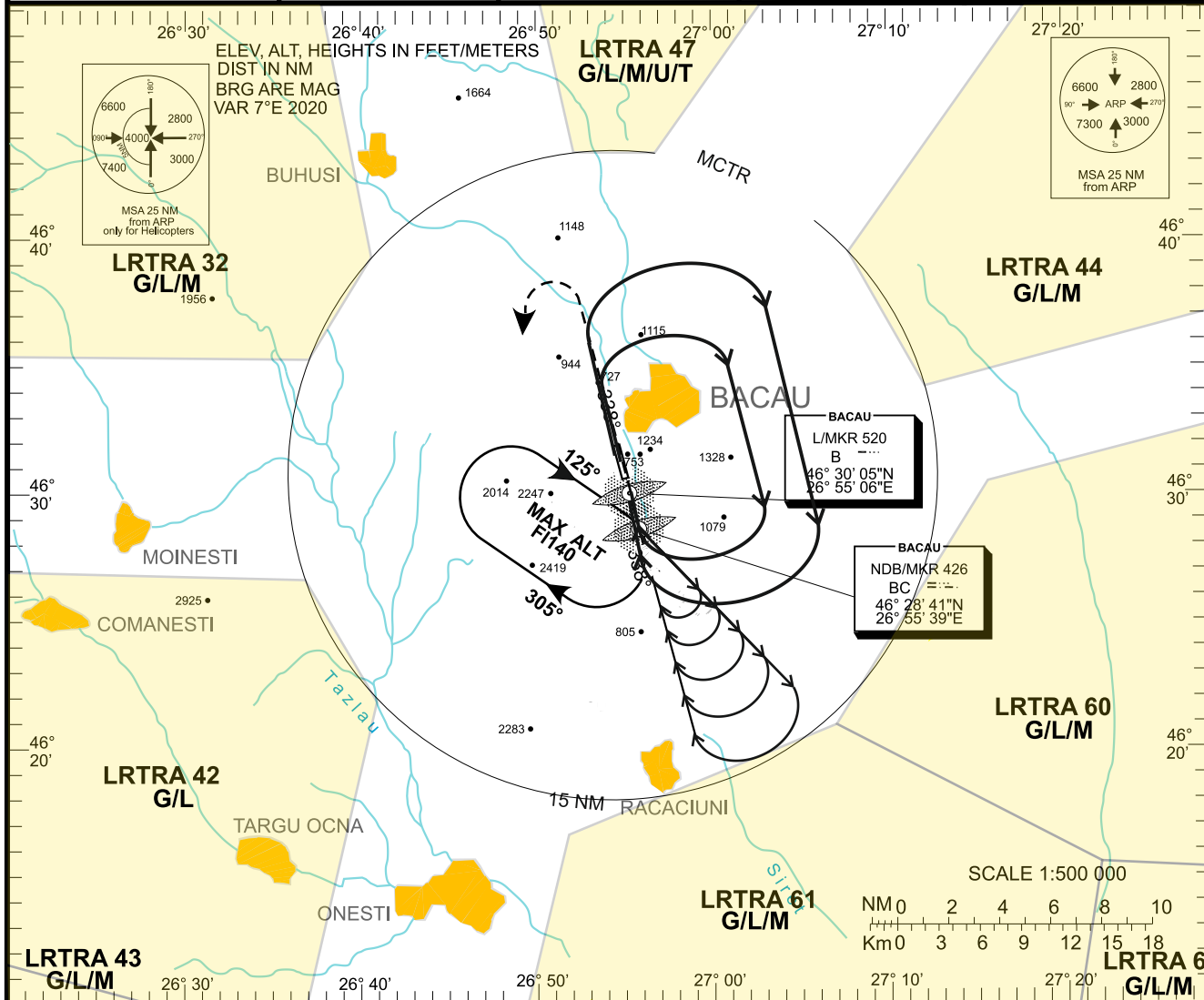


INSTRUMENT APPROACH CHART AERODROME ELEV. **608 ft** BACAU / Bacau (LRBC)

HEIGHTS RELATED TO
THR RWY 34 - ELEV 590 ft

NDB CAT A/B/C/D/H
RWY 34

| | | | | |
|--------------------------------------|--------------------------------------|-------------------------------------------|-----------------------|-----------------------|
| MAPP 124.750(P)/282.675(A) | MTWR 131.400(P)/122.100(A) | GND 133.700(P)/122.100(A) | | |
| PAR 124.750(P)/123.300(A) | APP COURSE 338 | NDB BC 426 B 520 BMN 345 BM 364 | TDZE 594 ft | LDA 8200 ft |



MISSED APPROACH:
IF Climb straight ahead on RWY track to 3300 QNH, then turn LEFT to BC NDB, climbing to 5000 QNH and hold or as directed.

| CAT | NDB | | CIRCLE TO LAND | |
|-------|--------------------|------|---------------------|------|
| | MDA/MDH | VIS | MDA/MDH | VIS |
| A / H | 1200(360)/609(185) | 1000 | 1630(500)/1023(310) | 1500 |
| B | 1200(360)/609(185) | 1200 | 1630(500)/1023(310) | 1600 |
| C | 1200(360)/609(185) | 1200 | 2640(800)/2033(620) | 2400 |
| D | 1200(360)/609(185) | 1600 | 2820(860)/2213(670) | 3600 |

| | | | | | | | |
|-----------------|--------|------|------|------|------|------|------|
| FAF-MAPT 1.5 NM | min:s | 1:17 | 1:00 | 0:54 | 0:45 | 0:39 | 0:34 |
| Rate of descent | ft/min | 372 | 478 | 531 | 637 | 743 | 849 |

BACĂU / Bacău (LRBC)
NDB RWY 34

AERONAUTICAL DATA TABULATION

| NDB approach to RWY 34 | |
|------------------------|------------------------------|
| Fix/Point | Coordinates |
| IF | |
| BC NDB (FAF) | 46°28'41.20"N 026°55'38.7"E |
| B LM (MAPT) | 46°30'05.20"N 026°55'05.6"E |
| THR RWY 34 | 46°30'39.97"N 026°54'51.92"E |